

Not just a funny turn

Your doctor or health professional thinks you may have had a **TIA**
(**T**ransient **I**schaemic **A**ttack or mini stroke)



This is a type of stroke that **gets better within 24 hours**

There is more information on page 3

You may have had some of these **symptoms**



weak arm or leg



drooping face



strange vision



difficulty thinking of words, speaking
and understanding other people



difficulty with your balance



Your doctor or health professional has **referred you to a stroke specialist for tests.**

The specialist will talk about **why** you had your symptoms,
and how to **reduce your risk** of it happening again

There are some things you **must do now**

Take aspirin if you have been given it

You may be told to take aspirin or another drug if you are **allergic** to aspirin



You **must** take this until you go to the clinic

Carry on taking any medicine you already take to reduce your risk of heart disease



Do not drive at the moment

The specialist will give you advice on driving when you see them



Watch out for symptoms of a full stroke

There is information to help on page 4



If your **symptoms do come back**, or you have other symptoms of a stroke **call 999 immediately**



Go to your appointment at the TIA clinic

Without any treatment 1 in 8 people will have a full stroke after their TIA



Ring if you have a question about your appointment at the clinic

0161 419 5299

We are open **Monday – Friday 8am – 5pm**

What is a **Transient Ischaemic Attack?** (**TIA** or mini stroke)

The **brain** controls **everything** we do -



movement

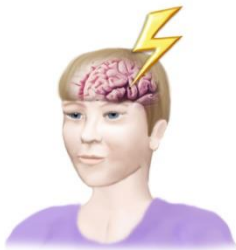
emotions

communication

thinking

The **brain** needs **blood**

Blood keeps the **brain** working



The **blood supply** can **stop**

Then the brain is **damaged**

This can happen **suddenly**

This is called a **stroke**

For some people the **signs of a stroke** go away within 1 day (24 hours)



This mini stroke is called a **Transient Ischemic Attack** or **TIA**



A TIA can be a warning sign of a full stroke

So...although your symptoms have gone you need urgent help

You may be **at risk** of a full stroke... even while you are waiting to see the specialist

Watch out for any symptoms

Use the FAST test (below) to help

Sometimes there are symptoms that look like stroke but later turn out to be another medical problem



Ring 999 and the healthcare experts will decide what to do

The Face, Arm, Speech Test (FAST)

...to help you recognise the symptoms of a stroke

F

A

S

T



Face weakness

Can the person smile?

Has their mouth or eye dropped?



Arm weakness

Can the person raise both arms equally?



Speech problems

Can the person speak clearly and understand what you say?



Time

...to **call 999**

For more information go to www.stroke.org.uk/resources/transient-ischaemic-attack-tia

Produced together with the Greater Manchester Stroke Operational Delivery Network