

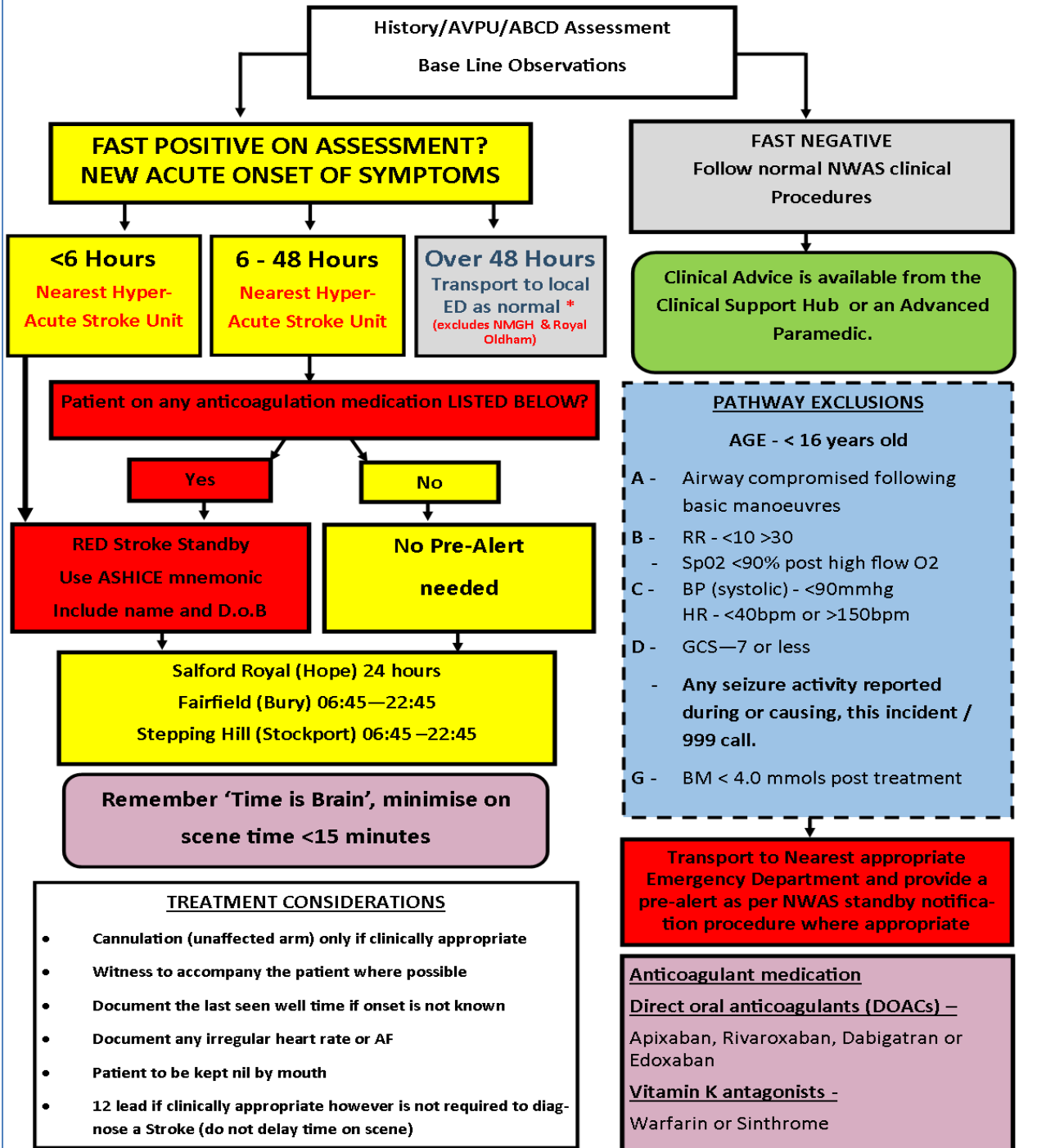
Title	GM Stroke Pre-hospital pathway flow chart
Description	Pre Hospital Flow Chart/Pathway, which enables clinicians to fit the patients to the pathway or eliminate through exclusions.
Applicable to	North West Ambulance Service (NWAS) Clinicians
Author	GMSODN & NWAS
Date and Version	21/10/19 Version 1.6
Document ID	PRE1
Date of issue	13th March 2018
Point of contact	Sarah Rickard (sarah.rickard@srft.nhs.uk) ODN Manager
Date for formal review	Oct 2020

Document History:

Date/Version	Reason for change	Changes made
25/08/15 (v 1.1)	N/A	First draft
01/09/2015 (v 1.2)	Changes to pathway agreed	48 hour upper limit introduced and PSC opening hours amended
26/02/2016 (v 1.3)	Amended wording	Exclusions updated
25/05/2016 (v 1.4)	Amended wording	Exclusions updated
13/03/2018 (V1.5)	Changes to pathway	Anticoagulant question added
21/10/2019 (V1.6)	Changes to pathway	Hours of onset updated



**Greater Manchester and Eastern
Cheshire Stroke Pathway**
Operational 21st October 2019



*Patients in the Pennine Acute Hospitals Trust catchment area will continue to go to Fairfield and not NMGH or Royal Oldham.